

Our **Organization...**

Established in 1967, the Northwest Pennsylvania Regional Planning and Development Commission (Northwest Commission) is an Oil City-based, public, non-profit regional resource for economic and business development as well as community development and planning.

Funding for the Northwest Commission comes from local, state and federal levels of government. We are pleased to provide quality services at no cost to our clients.

Our **Team...**

The Northwest Commission is comprised of skilled professionals dedicated to sustaining economic vitality and growth in the Northwest Pennsylvania region by fostering state, local and federal partnerships across public and private sector lines.

The Board of Directors represents county governments, private business, county planners, tourism and economic development corporations throughout the region.

Our **Services...**

The Northwest Commission strives to produce private sector job creation and retention through its business and economic development programs such as government contracting, business financing, international marketing assistance, keystone innovation zones and business attraction.

The Northwest Commission also provides community development and planning services to municipal governments, school districts, and non-profit organizations such as grants, transportation, energy, community revitalization and technology assistance to help communities stay progressive.

Our **Region...**

We are proud to serve eight counties in Northwest Pennsylvania including: Clarion, Crawford, Erie, Forest, Lawrence, Mercer, Venango and Warren.

mission statement

To provide leadership and assistance as well as collaborate and cooperate with our partners in strengthening business and job growth and improving the environment for economic and community development across the Northwest Pennsylvania region.

vision statement

Northwest Pennsylvania will grow in its business and economic vitality, its residents will become more prosperous and the quality of life will be enhanced in the region's counties and communities.

Adopted by the Board of Directors in October 2004
Developed by Staff and Board of Directors with Legislator Input



Board Chairman, Brian Beader

Chairman's Message

The year of 2010 proved to be another challenging year for the Northwest Commission yet we have remained positive and moved forward in our mission and goals. During these uncertain times, the need for a unified approach to economic development has never been greater. The team of dedicated professionals, committed to enhancing the economic and community development of Northwest Pennsylvania and improving the overall quality of life, has remained intact and continues to push forward to support all of the businesses, communities and partners in the region.

During the past year, the Commission has strengthened partnerships with the county economic development corporations, county planners and tourism. Each one contributes to the overall goal of enhancing economic development in Northwest Pennsylvania. Businesses also play a key role in the success of the Commission. Without them, we would not have any successes to report or services to provide.

This annual report was created to provide brief summaries of each program at the Commission and showcase some of the impacts in each of the counties we serve. Please take time to review the entire report to better understand the role of the economic and community development programs at the Northwest Commission and the results that have been achieved.

With over 43 years of service to the region, one thing is certain: the Northwest Commission will continue to work with businesses, communities, and partners to ensure the economic vitality of Northwest Pennsylvania.

Brian Beader

ARC/EDA

The following ARC and EDA projects were funded this year:

Ellwood City Main Street Revitalization
Lawrence County
ARC - \$200,000

Forest County Comprehensive Plan
Forest County
ARC - \$80,000

Knox Kane Trail Feasibility
Forest County
ARC - \$8,000

Linden Pointe Technology Center Equipment
Mercer County
ARC - \$100,000

Forest County IDC Coordinator
Forest County
ARC - \$47,000

Trade Adjustment Assistance Strategy Tooling & Machining Cluster
Crawford County
EDA - \$75,000

Forest Pre-kindergarten
Forest County
ARC - \$200,000

Forest Library Summer Reading Program
Forest County
ARC - \$6,480

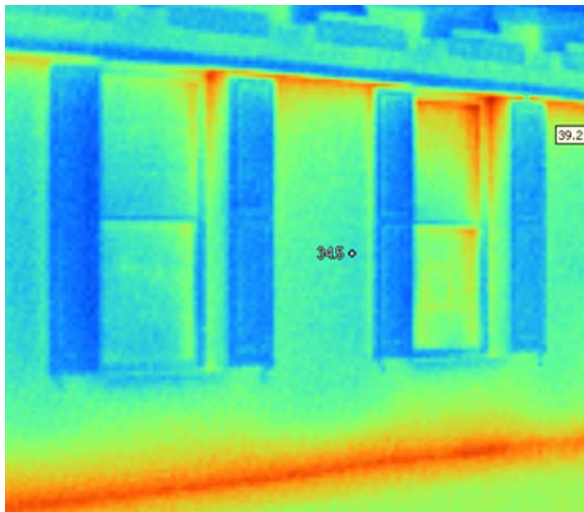
Erie Inland Port Feasibility Study
Erie County
EDA - \$494,439

Energy

The Energy Program directly aids local governments, hospitals, schools and non-profit organizations as they continue to work toward becoming more energy efficient. An Energy Advisory Council, comprised of local professionals and utility companies, helps to facilitate and guide the program.

In 2010 the Northwest Commission, a representative of the Pennsylvania Energy Partnership (PEP), developed a program in cooperation with Appalachian Lighting

81 Technical Assists
9 Energy Assessments
9 Energy Workshops
\$80,000 Saved through Utility Bill Analysis, Energy Assessments, Energy Contracting and Bulk Purchase Consortiums



A thermal image taken of a building to show how and where heat escapes along walls and windows

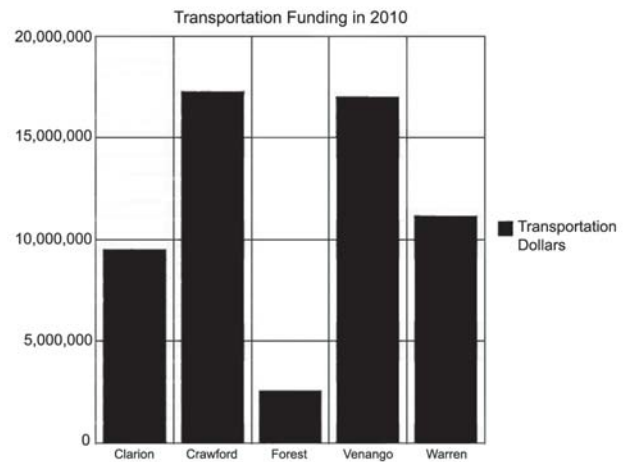
Systems Inc (ALSI) that will allow clients to undertake lighting efficiency projects with no initial capital outlays. The program currently provides street lights, high bay and parking garage lighting. Electricity savings from these projects typically ranges from 70% to 90%.

Thermal photography is available from certified Northwest Commission staff to provide building envelope inspections for the purpose of uncovering weatherization issues and opportunities. Through the proper use of a thermal imaging camera, weatherization issues, otherwise undetectable to the naked eye, are readily apparent.

Transportation

\$57,444,808 invested into projects in the 5-County Rural Planning Organization Region

The Transportation Program encourages maximum local participation and is responsible for coordinating transportation planning between PennDOT and the five rural counties of Clarion, Crawford, Forest, Venango and Warren.



The Crawford Area Transportation Authority (CATA) has worked with the Northwest Commission and the Transportation Advisory Committee (TAC) on the financial planning for a \$3.4 million dollar project to create the first-ever public transportation facility in Meadville and serve as the base of operations for CATA for the next 30 years. The new facility will house an indoor passenger waiting area, bus pass ticket sales, dispatch office, administration offices, driver training and driver break rooms. With the assistance of the planning partners, CATA was able to successfully program all federal, state and local funding through the State Transportation Improvement Program (STIP). CATA anticipates that the project will achieve silver status in Leadership in Energy and Environmental Design (LEED), making it one of only two public transportation facilities in the Commonwealth to reach LEED status. The new facility is slated to open for operation in the spring of 2011.



The new facility being built in Meadville, PA

"Venango County was fortunate to complete several successful transportation planning studies in cooperation with the Northwest Commission staff and we look forward to successful project implementation as a result of that work. Navigating the state and federal transportation project 'maze' is never easy and the Commission's guidance afforded us these opportunities. We look forward to developing a list of Transportation Capital projects in 2011 that will allow us access to state and federal transportation improvement monies in the future."

*- Judith A. Downs, Executive Director
Venango County Regional Planning Commission*

Community Revitalization

The Community Revitalization Program follows the established guidelines, principles and methodologies of the nationally recognized Main Street Program and the Pennsylvania specific Elm Street Program. Staff provides information, guidance and technical assistance to interested business, community and municipal leaders.



Downtown North East, PA

The Borough of North East was awarded a Pennsylvania Community Transportation Initiative (PCTI) grant. North East will receive \$300,000 to develop a Smart Transportation and Land Use Strategic Plan. The application was a joint effort of the borough, the township and the Downtown North East, Inc. (DNE) organization.

Community Revitalization staff has been working with the borough and DNE on multiple community revitalization initiatives through a partnership with the Erie County Redevelopment Authority. Projects include the PCTI application, the Main Street Program model for DNE, Gibson Park, Lake Shore Railway Museum, community greening and a store that will house a museum, restaurant, local products and an arts gallery.

The Revitalization of Youngsville (ROY) received the prestigious state-wide Townie Award for Organizational Excellence at the annual Pennsylvania Downtown Center's Conference awards dinner on June 15, 2010. Youngsville is one of four communities participating in the Warren County Regional Main Street Program and is a designated Route 6 Heritage Community.

The Borough of Youngsville received a PCTI grant for \$1,000,000 to implement the Youngsville Revitalization and Economic Redevelopment Enhancement Plan.



Allegheny Artistry is one of the businesses associated with the revitalization efforts in Youngsville

This streetscape project on Railroad Street is part of their Heritage Community celebratory gateway plans for the community and is a portion of a larger downtown revitalization effort.

Regional Planning

The Greenways Block Grant Program establishes connectivity between conservation and recreation. The program provides financial assistance needed to fund and finish eligible projects within the Northwest Region that otherwise would not qualify for funding. These projects also have to be identified in the Regional Greenways Plan in order to receive funding.



Progress at Deer Creek

The Deer Creek Stream Restoration is a Greenways Block Grant Project in Pulaski Township, Lawrence County that includes a total of 2,840 feet of stream restoration as well as 23 Pennsylvania Fish and Boat Commission fish habitat structures, 7 rock cross vanes, 600 feet of stream realignment, ° acre of wetland creation, 1,100 feet of floodplain creation and 5,680 feet of riparian buffer establishment.

Wallace and Pancher was contracted for survey, assessment and design of the stream restoration and realignment. In August 2010, Pulaski Township contracted with C. Crump for construction activities and the PA Fish and Boat Commission completed the survey and design of stream and proposed installation of the aquatic habitat and bank stabilization.

The project will be completed in the spring of 2011 with the installation of the remaining 10 fish habitat improvement devices.

Technology

The Northwest Commission is engaged in evaluating and responding to the technology needs of the region. The program seeks to educate consumers, businesses and community leaders about technology. The Northwest Commission's Technology Advisory Group (TAG) meets to address broadband issues such as ongoing community aggregation efforts, regional deployment initiatives and state and federal legislation related to technology and telecommunications.

12 Technology Classes Provided to Local Governments

126 Municipal Employees Trained Through MTAP

International Marketing

The International Marketing Program provides direct export development services to small and medium sized regional manufacturing and service companies, prepares them to enter and compete in the global marketplace and provides opportunities leading to increased revenue and jobs. The Northwest Commission serves as the regional coordinator for Pennsylvania's World Trade PA program, which offers a wide range of export assistance including market research, partner search, market entry guidance, technical support, trade events, grant programs and access to Pennsylvania's 23 overseas trade consultants who cover more than 50 top markets.

Cattron® Group International Inc. of Sharpsville is a regional exporter of industrial wireless remote control systems, related aftermarket parts and service for the primary metals, ports, mining, commercial, mobile, railroad and other industrial markets. Cattron® has worked very closely with the PA Trade Office in China-Shanghai, China-Beijing, Chile, Brazil and Central Europe.

The company signed a contract with the PA Trade Office in China-Shanghai and established their China office at the Pennsylvania Center in Shanghai, China. The PA Trade Representative in Shanghai helped Cattron® Industrial Control Equipment Trade Shanghai Co., Ltd. (CAP) identify, interview and hire their Marketing and Sales Manager, Service Technician and is in the process of assisting CAP identify an External Sales Engineer for China.



Underground communication and radio remote control systems for mining applications

"The Pennsylvania Center in Shanghai has helped CAP establish a cost-efficient platform, high-performance, low-cost and low-risk marketing, sales, aftermarket parts and service presence in China," says Jim Robertson, Executive Director of Business Development for Cattron® Group International. "During our almost three-year relationship with Pennsylvania's Shared Business Center in Shanghai, CAP has utilized their HR and accounting services, Wholly Foreign Owned Enterprise (WFOE) Registration and center meeting rooms. The Pennsylvania Center in Shanghai has enabled Cattron to extend our reach into the China market."

"Thank you again to the team in Australia for their efforts on our behalf. We would never have gotten to this point without their team's assistance."

- Chris Crabill, Vice President of Sales & Marketing and International Business Development, EMSCO Group

The Emsco Group of Girard successfully markets over 12 product lines in the United States and internationally, ranging from lawn and garden, recreational sporting goods, children's toys, home organization, trim and tree and janitorial/cleaning aid products.



Kids outdoor recreation products manufactured by the EMSCO Group

As a result of the company's participation in the 2010 Pennsylvania trade mission to Australia and New Zealand, Emsco reported their first official purchase order from Woolworths (Lowe's) - Australia.

Eleven of Emsco's edging and fencing products have been selected to be part of the new lawn and garden product assortment at Woolworths.

Woolworths has recently formed a partnership with Lowe's (US) and plans to open over 150 big-box hardware homecenter stores over the next five years with the first six stores to be opened in 2011.

This order is Emsco's first step into the Australian/New Zealand retail market and represents excellent future sales opportunities for Emsco, as this new chain of hardware stores is rolled out across the country.

The Commonwealth's authorized trade representative in Sydney facilitated the introduction between Woolworths-Lowe's buying department and Emsco.

543 International Jobs Created
or Retained

\$117,661,323 in International Sales

Government Contracting

Certified by the United States Department of Defense's National Cooperative Agreement as the regional Procurement Technical Assistance Center (PTAC), the Northwest Commission staff is continuously trained by the Association of Procurement Technical Assistance Centers (APTAC) to increase resources and knowledge on procurement policies and processes.

140 Individuals Trained
\$30,301,471 in Sales
397 Jobs Created
or Retained

Northwest Commission staff assist clients with prime and sub-contract processes including registrations, marketing, proposal writing and submission of bids. Clients also receive guidance on applying for Minority-Owned, Veteran-Owned, Woman-Owned and HUBZone (Historically Under-Utilized Business) certifications.



Government 101 training in Mercer County

The PTAC team conducted "Government 101" training seminars to provide introductory and advanced sessions to new and existing PTAC clients. These seminars educate attendees on the many facets of government contracting including local, state and federal topics. Training seminars are scheduled once a month and alternate between the eight counties.

"The Procurement Technical Assistance Center at the Northwest Commission has been an invaluable resource for us. With their help, we were able to get registered with the Wide Area Work Flow (WAWF) and receive our funding. With their support and direction, it makes doing business with the government a lot easier!"

- Chuck Janicki, Elite Frogs Parachute Team

"Graham Tech, Inc., a HUBZone certified small business located in Crawford County, has worked with the Northwest Commission's PTAC program since 2006. We have had great success with sub-contracts in support of federal contracts. The assistance we receive from the Northwest Commission's PTAC Program in providing specifications, training and getting government contracting type questions answered in a timely manner, has been an invaluable resource to the company. We also have benefited from networking opportunities when attending various events planned by the Northwest Commission."

- Lynette Graham, Graham Tech, Inc.

Business Financing

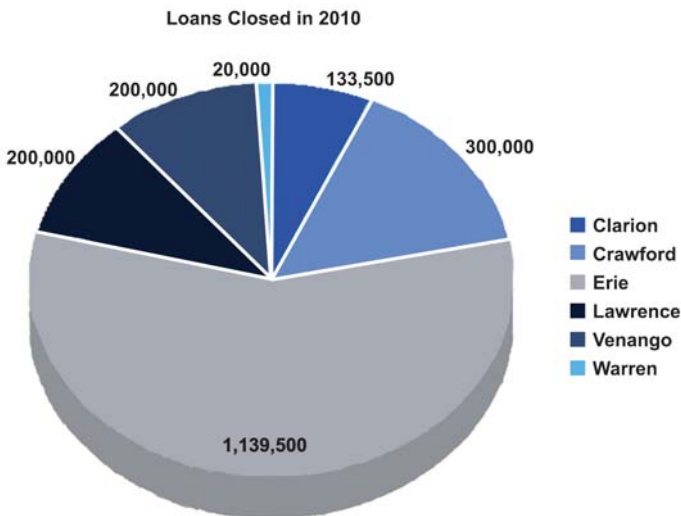
The Loan Program provides funding up to \$200,000 to meet the financing needs of various sized businesses. The Revolving Loan Fund Program is comprised of funding from the Economic Development Administration (EDA), the Appalachian Regional Commission (ARC) and the United States Department of Agriculture (USDA). Loans can be used by companies for land and building, machinery and equipment and working capital. The Northwest Commission also administers the Small Business Administration (SBA) Microloan Program to assist entrepreneurs or existing businesses in the region with loans for small projects. The Microloan Program loans up to \$20,000 for machinery and equipment and working capital needs. The Northwest Commission is also the Area Loan Organization (ALO) for the Pennsylvania Small Business First (SBF) Loan Program.

Riverhill, Inc. of Clarion County financed the expansion of their Dairy Queen with the assistance of a Small Business First loan from the Northwest Commission. The Northwest Commission partnered with First United National Bank to assist with financing the project. The company added an addition to the building and a patio. Riverhill, Inc. plans to have a total of 10 employees.



Loan client, Riverhill, Inc.

KDIndustries, Inc. of Erie County purchased a conveyor system with the assistance of a loan from the Northwest Commission's Economic Development Administration Revolving Loan Fund. KDIndustries manufactures KOLD-DRAFT commercial ice machines. KDIndustries, in conjunction with In-Store Bagging System LLC (ISB), has launched the In-Store Ice Bagging System that creates the ice and bags it in one single motion. The Northwest Commission partnered with Erie City Enterprise Zone and Erie County Redevelopment Authority to finance this project.



"Northwest Commission is a key component of the 'economic engine' in this area. Their assistance has been an important part of Optical Filters growth in Meadville. In five years, we have fully utilized 28,000 sq. ft. of previously idle factory space and created over 50 new jobs. In 2010/2011, we will commission another 20,000 - 30,000 sq. ft. of factory and continue to make new employment opportunities."

-Optical Filters USA, LLC



Keystone Innovation Zone (KIZ)

In its second round of funding from the Ben Franklin Technology Development Authority, the Northwest Pennsylvania KIZ continues to provide entrepreneurs an advantage in working with local institutions of higher education to hire interns and conduct research with faculty and students.

Entrepreneurs are eligible to apply for a microgrant from the program for innovation and up to \$100,000 in tax credits from the

Commonwealth of Pennsylvania. This unique program brings together the leaders at Thiel College, Allegheny College and Clarion University, along with economic developers, businesses, government leaders and workforce developers to discuss opportunities to help communities cultivate new technology and stimulate entrepreneurship.



Gregory Barnes Center for Biotechnology Business Development at Clarion University is located in a NWP Keystone Innovation Zone. Most of the companies located within the building received KIZ Interns in the summer and fall of 2010.

Business Attraction

The Northwest Commission launched its Business Attraction Program in 2005 with the development of the first regional sites and buildings web-based search tool, www.SelectPAgreatlakes.com. The business attraction team focuses on marketing the region to site selectors and key corporate decision makers from around the globe. Pennsylvania's Great Lakes Business Partnership is an informal partnership between the Northwest Commission and the eight-county Economic Development Corporations (EDCs), who contributed significantly to the creation of the website by supplying accurate sites and buildings information.

During 2010, the Northwest Commission attended two trade shows, American Wind and Energy Association (AWEA) for Wind Energy and Medical Device Manufacturing (MDM) East for Medical Devices, to identify potential businesses to attract to the region.

Research on Investment (ROI) was hired to identify 10 qualified leads for attraction. The Northwest Commission also partnered with First Energy to visit two site selectors with Economic Developers from Western Pennsylvania.



Screenshot of the selectPAgreatlakes.com website

Fourth Annual *Connect 2 Communities* Conference

The Northwest Commission hosted the fourth annual *Connect 2 Communities* Conference at Cross Creek Resort in Titusville on May 5, 2010. Over 145 community leaders, industry professionals and local government officials attended the event. The conference provided 11 educational sessions to spread awareness of municipal programs and funding opportunities available to assist the region's local governments and communities.



2010 *Connect 2 Communities* attendees

The conference is integral to the continuing development of Northwest Pennsylvania in response to a changing economic climate.



Bill Petit, P.E., District 1-0 District Executive, was the keynote speaker at the 2010 *Connect 2 Communities*

During the lunch session, keynote speaker, Bill Petit, District Executive of PennDOT Engineering District 1-0, presented "Connect 2 Communities, A Bold, New Frontier." His speech provided information on the sustainability of transportation routes and best practices in light of budgetary deficits. State agency representatives also attended the event.

Participation by these agencies offered the local government and municipalities an open forum to ask questions and gather information on the resources available to them.

"Connect 2 Communities has been extremely helpful in educating us about programs, regulations, funding sources, smart growth and best practices, and has provided communities with an excellent opportunity to learn what other communities are doing."

*- Char Kerr, Poggemeyer Design Group
and Downtown North East, Inc.*

Make the Connection: *Plug into Local Resources*



Lorenzo Simonelli, President & CEO of GE Transportation, was the keynote speaker at the conference held in Erie

On September 15, 2010, the Northwest Commission held the first annual conference and expo showcasing the valuable resources available through its Business and Economic Development Programs. Premium choice technical speakers were recruited for targeted training on International Trade, Government Procurement, Small Business Financing and resources available through the Keystone Innovation Zone Program. The event was rounded off with presentations on new and exciting initiatives taking place in the region to help companies stay ahead of the

game. The conference, titled “Make the Connection: Plug into Local Resources,” was held at the Bayfront Convention Center in Erie with over 150 people in attendance.

Businesses learned about new initiatives such as Marcellus Shale and energy grants. A presentation on the economic outlook of Erie and the Northwest Pennsylvania region helped attendees better understand what is on the horizon.

The day-long event kicked off with breakfast and opening remarks from Northwest Commission staff. Participants were free to attend different educational sessions throughout the day. Lorenzo Simonelli of GE Transportation was the lunch keynote speaker. Over 15 vendors had display booths and were available for networking with companies between sessions.



Lorenzo Simonelli, President & CEO, GE Transportation; Janet Anderson, Northwest Commission; Stephan Koller, Director, Communications & Public Affairs, GE Transportation

What Conference Participants Said About the Sessions...

“A great overview of some very complex regulations. Super presenters!”

“Very informative and easy to understand!”

“This training will be invaluable as we move into global sales!”

“AWESOME! I would highly recommend this to anyone. Great free resources explained!”

2010 Regional Impact Summary

Business Financing

83 Jobs Promised
182 Jobs Retained
13 Loans Closed
\$1,993,000 in Loans Awarded

Government Contracting

411 Jobs Created or Retained
10 Training Sessions
140 Individuals Trained
\$90,876,269 in Government Sales

International Marketing

528 Jobs Created or Retained
\$120,716,191 in International Sales

Keystone Opportunity Zone

\$167,136,833 in New Capital Investment
5,759 Jobs Created or Retained

Keystone Innovation Zone

8 Companies Received Assistance
378 Jobs Created or Retained
11 Interns were Placed in KIZ Companies
\$227,000 in Tax Credits were Submitted

Broadband Aggregation

12 Technology Classes Provided to Local Governments
265 Technology Surveys Sent to Municipalities in the Northwest Region

Energy Program

81 Technical Assists
9 Energy Assessments
9 Energy Workshops
\$80,000 Saved Through Utility Bill Analysis, Energy Assessments, Energy Contracting and Bulk Purchase Consortium

MTAP Program

126 Personnel Trained

LTAP Program

106 Personnel Trained

Regional Planning

13 Greenways Block Grant Awards
\$255,000 in Total Awards

Transportation

\$57,444,808 Invested in the 5-County Rural Planning Organization Region

Clarion County

Loan Dollars: \$133,500
International Sales: \$1,200,000
Government Sales: \$9,400
Transportation Funding: \$9,481,884

Companies Assisted

Allegheny Wood Products
 Car Mate Trailers, Inc.
 CBF Contracting
 Clarion Industries
 Clarion Office Equipment
 Clarion University
 Delta Technology Solutions
 Divani Chocolate Boutique
 M and B Services
 Natures Blend Wood Products, Inc.
 Pengrove Building Systems, Inc.
 Riverhill, Inc.
 Zaber & Co., Inc.

Communities/Organizations Assisted

Ashland Township
 Beaver Township
 Callensburg First Church of God
 Clarion Borough
 Clarion County Economic Development Corporation
 Clarion Township
 Clarion University
 Farmington Township
 Foxburg Borough
 Knox Borough
 Knox Township
 Limestone Township
 Monroe Township
 New Bethlehem Borough
 Paint Township
 Shippenville Borough
 Washington Township

Crawford County

Loan Dollars: \$300,000
International Sales: \$9,168,392
Government Sales: \$4,049,802
Transportation Funding: \$17,274,994
EDA Funding: \$75,000

Companies Assisted

2W Technologies, LLC
 Abbatron, LLC
 Acutec Precision Machining, Inc.
 Alturnamats, Inc.
 At Your Request Cleaning, Inc.
 Baillie Lumber
 Bayless Fuel, LLC
 Bra-Vor Tool & Die Company, Inc.

ChipBlaster
 Clear Lake Lumber
 D and B Custom Wiring
 Deo Decises e-Publishing Group, LLC
 Do-Co, Inc.
 Dynasty Software
 Excaliber Machine Company
 Form Tool & Mold, Inc.
 French Creek Tool and Manufacturing, LLC
 G.S.G. Manufacturing, Inc.
 Geometric Design & Technology, Inc.
 Graham Tech, Inc.
 Grand Valley Manufacturing Company, Inc.
 Grandma Lures
 Greenleaf Corporation
 Heatrex, Inc.
 Hewlett Mfg.
 Holbrook Tool & Molding, Inc.
 Hytron Electric Products Division
 Ideal Tool Company, Inc.
 Info Techniques
 Jordan Specialty Excavating
 KEHR Manufacturing Resources, LLC
 Kuhn Tool & Die, Co.
 Laser Tool, Inc.
 Leech Carbide
 Lincoln Metal Processing Co., Inc.
 MacLean Seagertown, LLC
 MAJR Products Corporation
 Meadville Forging Company
 Meadville Tool Grinding, Inc.
 Minco Tool & Mold, Inc.
 Molded Fiber Glass Tray Company
 Optical Filters
 PASCO Tool & Plastics, Inc.
 Penn Weld Custom Fabrication
 Penn-Sylvan International, Inc.
 Peter's Heat Treating
 Platts Mills, Inc.
 Pro Tech Machining, Inc.
 Progress for Industry
 Progressive Tool & Die, Inc.
 Quality Engineering Solutions
 Realco Diversified, Inc.
 Salvage Direct
 Scribe Printing Technologies
 SECO / Warwick Corp.
 Sharp Tool & Die, Inc.
 Shorts Tool and Manufacturing, Inc.
 Signature Vacuum Systems, Inc.
 Software Touch Corporation
 Svetz Consulting Services, LLC
 Universal Stainless & Alloy Products, Inc.
 US Bronze Foundry & Machine, Inc. / Lubrite Technologies
 Vantage Healthcare Network
 Vision Tool & Manufacturing, Inc.
 Weyerhaeuser Quality Assurance / Northwest Hardwoods
 Wilson Engineering Services, PC
 Wood Technologies, Inc.

Communities/Organizations Assisted

Allegheny College
Athens Township
Beaver Township
Bloomfield Township
Cambridge Springs Borough
Centerville Borough
City of Meadville
City of Titusville
Conneaut Lake Borough
Conneaut Township
Conneautville Borough
Cussewago Township
East Mead Township
Fairview Township
Meadville Area Water Authority
North Shenango Township
Oil Creek Township
Pine Township
Randolph Township
Richmond Township
Saegertown Borough
South Shenango Township
Spartansburg Borough
Spring Township
Steuben Township
Summerhill Township
Summit Township
Titusville Redevelopment Authority
Venango Township
West Mead Township

Erie County

Loan Dollars: \$1,139,500

International Sales: \$71,973,825

Government Sales: \$8,380,898

EDA Funding: \$494,439

Companies Assisted

Accudyn Products, Inc.
AccuSpec Electronics, LLC
Advanced Welding Technologies, Inc.
Amatech / Polycel
American Lumber Company
American Tinning and Galvanizing Company
Ameridrives Couplings
ASK Process, Inc.
Beaumont Development
Beaumont Runner Technologies, Inc.
Berman Bedding, Inc.
Bliley Technologies
Bollinger Technical Services

Builders' Hardware and Specialty Company, Inc.
CARON Enterprises, Inc.
Chroma Logic
CMI Energy EPTI
Composiflex
Corry Contract, Inc.
Corry Manufacturing Co.
Corry Micronics
CSI Industries, Inc.
Custom Engineering Company
D and E Machining
Distributed Network Software
DuraTite Systems, LLC
Edinboro University
Electronic Communication Services
EMSCO Group
EnTech Plastics
Erie Bronze & Aluminum Co.
Erie East Market, Inc.
Erie Forge & Steel, Inc.
Erie Molded Plastics, Inc.
Erie Plating
Erie Press Systems
Erie Technical Systems - Mfg. & Distribution Div.
Fiesler Sand & Gravel, LLC
Finish Thompson, Inc.
Fluid Engineering
Frontier Lumber, Inc.
G&S Safety Products
George-Ko Industries, Inc.
Global Trading & Development / Donico Trading, LLC
GPJ, LLC
Great Lakes Home Healthcare
GreenLighting LED
H & H Machined Products, Inc.
Harrison Machine Company, LLC
Haysite Reinforced Plastics
HERO BX
Hydro Pac, Inc.
Industrial Sales & Mfg., Inc.
Infinite Power and Design, Inc.
Innovative Pressure Technologies, LLC
iSigns, Inc.
Jepson Precision Tool, Inc.
JTM Foods, Inc.
KDIIndustries, Inc.
Lakeview Forge Co.
Logistics Plus, Inc.
Mac & B, Inc.
MacDonald Illig Jones and Britton, LLP
McCormick Coffee Company
McShane Welding Company, Inc.
Mercyhurst College
Micro Plating, Inc.
Mikron Valve and Manufacturer, Inc.
Millcreek Metal Finishing

Modern Industries, Inc.
 Moore Research Services, Inc.
 National Tool Grinding, Inc.
 Naturally Yours
 North Coast Conduit, LLC
 North Coast Tool, Inc.
 NUVO, Inc.
 Paragon Packaging Products
 Penn-Union Corporation
 Pinnacle Plastics, Inc.
 Plastikos, Inc.
 Polymer Molding, Inc.
 Premier Conduit, Inc.
 Process and Data Automation, Inc.
 Provider Resources, Inc.
 PSB Industries, Inc.
 R. Conrader Company
 Rapid Mold Solutions, Inc.
 Reed Mfg., Co.
 Renewergy
 Rogers Brothers Corporation
 Ron Jones Hardwood Sales, Inc.
 Royal Homes Construction and Development, Inc.
 Sementilli Contracting Services, Inc.
 Sir Clyde & Co.
 Skinner Power Systems, LLC
 Snap Tite, Inc.
 Specialty Online Chairs and Furnishings
 Spinworks, LLC
 State to State Food Broker
 Steward Earth
 Sumersett Construction
 Sunburst Electronics
 Synergy Applications, Inc.
 Telatron Marketing Group, Inc.
 The Thermoclad Company
 Titan Tool Company, Inc.
 Trauma Technologies, Inc.
 US Netting
 VanAmburg Group, Inc.
 Viking Plastics
 Walker Filtration
 Windsor Beach Technologies, Inc.
 Zurn Plumbing Products Group

Communities/Organizations Assisted

Albion Borough
 Amity Township
 City of Corry
 City of Erie
 Conneaut Township
 Edinboro Borough
 Elk Creek Township
 Fairview Township
 Franklin Township
 Gannon University
 Girard Borough
 Girard Township

Greene Township
 Greenfield Township
 Harbor Creek
 LeBoeuf Township
 McKean Township
 Millcreek Township
 North East Borough
 North East Township
 Springfield Township
 St. Mark Evangelist Church
 Stairways Behavioral Health
 Union City Borough
 Washington Township
 Waterford Borough
 Waterford Township
 Wayne Township
 Wesleyville Borough

Forest County

Government Sales: \$800,000
Transportation Funding: \$2,531,097
ARC Funding: \$341,480

Companies Assisted

Forest Scientific Corporation
 Industrial Timber & Lumber
 JM Enterprise, LLC
 Oil Creek Manufacturing
 Vee Veteran Employment Enterprise, Inc.

Communities/Organizations Assisted

Barnett Township
 Howe Township
 Jenks Township
 Tionesta Borough
 Villiage of Marienville

Lawrence County

Loan Dollars: \$200,000
International Sales: \$2,324,701
Government Sales: \$217,398
ARC Funding: \$200,000

Companies Assisted

Approved Toilet Rentals, Inc.
 ATZ Service Group, LLC
 Berner Energy Recovery, Inc.
 Berner International Corp.
 Blank Concrete and Supply
 Bryan China Company
 Consolidated Glass Corporation
 Custom Etch, Inc.
 EACO Chem, Inc.

East Coast Suspension
Ellwood Specialty Steel, Co.
Epiphany Solar Water Systems, LLC
Favorite Office Automation, LLC
Human Services Center
Industrial Tube Cleaning, Inc.
J.C. Quarter Horses, LLC
Lamping and Associates, LLC
Medart, Inc.
Mooney, Ayres & Associates
New Castle Candy Company
Pabcor, Inc.
RAR Engineering Group, Inc.
Richardson Cooling Packages, LLC
State Line Roll-Off Service
Steelite International
Stevens Masonry Construction, Inc.
The Eric Ryan Corporation
Treloar & Heisel, Inc.
Videoguybob Multimedia
Zurn Plumbing Products Group

Communities/Organizations Assisted

Bessemer Borough
Ellwood City Borough
New Wilmington Borough
Pulaski Township
Washington Township
Wilmington Township

Mercer County

International Sales: \$18,218,600

Government Sales: \$30,000

ARC Funding: \$100,000

Companies Assisted

Aluminum Shapes, LLC
American Cap Company, Inc.
APEX Engineered Products
B.E.S.T. Labs, Inc.
BioRemedial Technologies, Inc.
Boyer's Automation and Controls Engineering and Construction
Cattron Group
Chadderton Trucking, Inc.
Combine Construction, Inc.
Combined Systems, Inc.
Compliance Environmental Services
Component Intertechnologies, Inc.
Customfold, Inc.
D S Hinkson
Deist Industries, Inc.
FORTA Corporation
Furniture Footies
G.G.E., Inc.
Grace Industries, Inc.
Graham Stamping Company
Greenville Metals, Inc.
Greenville Neuromodulation Services
Hapeman Electronics

Hapeman Software Solutions
Hardinger Transfer Co., Inc.
Hodge Foundry, Inc.
Hot Pepper Wax, Inc.
International Timber & Veneer, L.C.
Interstate Chemical Company, Inc.
Jamestown Paint and Varnish
Kalco Metals, Inc.
Keffer Development Services, LLC
Knievel Motorcycle Manufacturing, Inc.
Muscle Products Corp.
Novocell Semiconductor, Inc.
Omega Logging, Inc.
Orbital Embedded, Inc.
Penn-Ohio Trading Company
Pennsylvania Equipment, Inc.
Pine Instrument Co.
Powered Aire, Inc.
Rademacher Industrial Systems, Inc.
Regenex Corporation
Reynolds Services International, Inc.
Shaco Racks
Shenango Steel Buildings, Inc.
Signature Aluminum, Inc.
Solar Atmospheres of Western PA
Spang Power Electronics
Steelgrain
Stevens Clogging Supplies
SUNBELT Transformer
Supreme Manufacturing
Technical Precision, Inc.
Thiel College
Troutmoon, Inc.
VEC Technology
Wallace and Panther, Inc.
Wendell August Forge
Werner
Wheatland Steel Processing
Winner International
WinTronics, Inc.

Communities/Organizations Assisted

City of Farrell
City of Hermitage
Clark Borough
Cool Spring Jackson Lake Latonka Joint Authority
Deer Creek Township
Fairview Township
Frenchcreek Township
Grove City Borough
Jackson Township
Liberty Township
Mercer Area Chamber of Commerce
New Vernon Township
Perry Township
Shenango Township
South Pymatuning Township
South Pymatuning Township Municipal Authority
Stoneboro Borough
Wheatland Borough
Wilmington Township
Wolf Creek Township
Worth Township

Venango County

Loan Dollars: \$200,000

International Sales: \$2,987,569

Government Sales: \$6,537,519

Transportation Funding: \$17,001,671

Companies Assisted

Action Auto Service, Inc.
Anderson Metal Industries, Inc.
Changing Times Telephone
Conair Group / IPEG
Contempo Tech Cleaning
Cosworth Office Solutions
Cranberry Building Solutions
Dennis Farms
Electralloy
Franklin Bronze and Alloy Co., Inc.
Franklin Bronze Plaques
Franklin Industries
FrenchCreek Production
Hanna Transfer Company
Hickman Lumber Co.
Kapp Alloy & Wire, Inc.
Klapec Trucking Company
Liberty Electronics, Inc.
Matric Limited
Oakland Products
Penn-North Plastics, Inc.
Pyle-Stones Asphalt and Cleaning
R.N. Goss Gas Products Company
Rial Construction
Schake Industries
SMS Millcraft
Specialty Fabrication and Powder Coating, LLC
Sperian Fall Protection
Stover Tree Service
Taurus Toy
Venango Training and Development Center
Voyten Electric & Electronics
Welding Technologies, Inc.
Wiegel Brothers Marine
Witherup Fabrication & Erection, Inc.

Communities/Organizations Assisted

Cherrytree Township
City of Franklin
City of Oil City
Clarion University, Venango Campus
Clintonville Borough
Community Ambulance Service
Cooperstown Borough
Cornplanter Township
Cranberry Township
DeBence Antique Music World
FICDA
French Creek Township
Galaxy Federal Credit Union
Jackson Township
Mineral Township
Oakland Township
Oil City Chamber of Commerce
Oil City Museum
Oil Creek Township

Oil Region Alliance
Plum Township
Richland Township
Rockland Township
Sandy Creek Township
Sugarcreek Borough
Valley Grove School District
Venango Catholic High School
Victory Township

Warren County

Loan Dollars: \$20,000

International Sales: \$14,843,104

Government Sales: \$70,851,252

Transportation Funding: \$11,155,162

Companies Assisted

Allegheny Valve & Coupling, Inc.
Betts Industries, Inc.
Bingaman & Son Lumber, Inc.
Buccardo's Gas/Restaurant & More
Eagle Eye Infrared Systems, LLC
Ellwood National Forge
Faul Construction
Forward Vision Systems, Inc.
Holden Precision Machining
James P. Hunter Associates
Kersey & Associates
Meridien Hardwoods of PA
Northwest Engineering Associates
Petrex, Inc.
Rexnord, Inc.
Servtech
Specialty Lamps
Turning Solutions, Inc.
Watts Commercial Furniture
Wayne Concrete
Whirley Industries, Inc.

Communities/Organizations Assisted

City of Warren
Columbus Township
Conewango Township
Deerfield Township
Elk Township
Farmington Township
Freehold Township
Glade Township
Mead Township
Pine Grove Township
Pleasant Township
Sheffield Township
Southwest Township
Sugargrove Borough
Tidioute Borough
USDA Forest Service
Watson Township
Wilder Museum
Youngsville Borough

Board of Directors



Pictured back row left to right: Larry Adams, Brian Belder, Morris Waid, Basil Huffman, John Eggleston, Bill McKinley, Tom McKinley, Steve Craig and Jim Decker **Front row left to right:** Jake Rouch, Judy Downs, Jan Beichner, Jan Cornwell, Donna Hartle, Lizette Olsen and Mike Olewine

Larry Adams, *Central Electric Cooperative*

Mike Allyn, *Titusville Redevelopment Authority*

Commissioner Jan Beichner, *Venango County*

Commissioner Brian Belder, *Mercer County*

Jan Cornwell, *Erie County Planning Commission*

Commissioner Steve Craig, *Lawrence County*

Jim Decker, *Warren County Chamber of Business and Industry*

County Executive Barry Grossman, *Erie County*

Commissioner John Eggleston, *Warren County*

Councilman Joe Giles, *Erie County*

Commissioner Donna Hartle, *Clarion County*

Commissioner Basil Huffman, *Forest County*

Elton Kline, *Masonry Contracting Consultant*

Tom McKinley, *Sentinel Onsite Support*

Bill McKinley, *Principal, PitViper Consulting*

Lizette Olsen, *AWARE, Inc.*

Judy Downs, *Venango County Planning*

Deborah Plant, *Mercer County Chamber of Commerce*

Jake Rouch, *Erie Regional Chamber & Growth Partnership*

Commissioner Morris Waid, *Crawford County*

Mike Olewine, *Warren County Visitors Bureau*

Maryann Yochim, *National Fuel*

Staff Contacts



Pictured back row left to right: Vonda Caldwell, Barb Yard, Vicky Sabella, Amanda Slider, Amber Walters, Suzanne Gagliardo, Ned Goucher, Daryl Coyne, Janet Anderson, Travis Siegel Front row left to right: Jo Cramer, Sue Smith, Krystal Pistone, Claudia Garcia, Katarina Ishman, Dorte Heffernan, Lisa Wood

Janet Anderson

Director, Business & Economic Development
janeta@nwcommission.org

Vonda Caldwell

Senior Administrative Assistant
vondac@nwcommission.org

Daryl Coyne

Manager, Loan Programs
darylc@nwcommission.org

Jo Cramer

Administrative Assistant
joc@nwcommission.org

Suzanne Gagliardo CMSM

Manager, Community Development
suzanneg@nwcommission.org

Claudia Garcia

Senior International Trade Specialist
claudiag@nwcommission.org

Ned Goucher

Senior Director, Organizational Development
nedg@nwcommission.org

Dorte Heffernan CGBP

Manager, International Trade
dorteh@nwcommission.org

Katarina Ishman

International Trade Specialist
katarinai@nwcommission.org

Krystal Pistone

Government Contracting Specialist
krystalp@nwcommission.org

William Rupert

Manager, Energy Program
williamr@nwcommission.org

Vicky Sabella

Fiscal Controller
vickys@nwcommission.org

Travis Siegel

Marketing Specialist
traviss@nwcommission.org

Amanda Slider

Loan Specialist
amandas@nwcommission.org

Sue Smith

Manager, Regional Planning
susans@nwcommission.org

Amber Walters

Administrative Assistant
amberw@nwcommission.org

Lisa Wood

Manager, Government Contracting
lisaw@nwcommission.org

Barb Yard

Fiscal Assistant
barby@nwcommission.org

Oil City Office (Headquarters)

395 Seneca Street | PO Box 1127
Oil City, PA | 16301 | USA
P: 814.677.4800
F: 814.677.7663

Clarion Office

627 Wood Street
Clarion, PA | 16214 | USA
P: 814.297.7158
F: 814.297.7164

Outreach Offices

Penn-Northwest Development Corporation
749 Greenville Road
Mercer, PA | 16137 | USA
P: 724.662.3705

Erie Regional Chamber and Growth Partnership
208 East Bayfront Parkway, Suite 100
Erie, PA | 16507 | USA
P: 814.454.7191

www.nwcommission.org

www.paldd.org

The Northwest Commission is a Local Development District serving the eight-county region of Northwest Pennsylvania including Clarion, Crawford, Erie, Forest, Lawrence, Mercer, Venango and Warren Counties.